



Friends of Old Maui High School

# SILVERSWORD

Summer 2006

## 2007 MAUI HIGH ALUMNI REUNION SCHEDULED

### Plan Now to Come Home to H'Poko

#### FRIENDS, COUNTY BEGIN CAMPUS REVITALIZATION

##### \$275 Grant will assess infrastructure

Before master planning can begin for the 24-acre MHS H'poko site, the long-neglected buildings and infrastructure must be investigated to determine the safety, availability and use potential of every component. Friends will work closely with the County of Maui to procure engineering analysis services for utilities and structures. Some eleven wood and cement block buildings will be surveyed, with the hope that most can be economically re-used in the future facility. Maui Mayor Alan Arakawa and the Maui County Council have demonstrated great confidence in Friends by appropriating this grant, which will enable significant and necessary work toward the creation of a community facility incorporating the Patsy Takemoto Mink Center.

While the Friends' Board of Directors has not taken a position regarding the eventual use of the H'poko campus, we will participate in all opportunities for public review and comment, and will work to ensure that planning for the site considers community needs and the Friends' goals.

With our working partner, Community Work Day, and with the dedicated MHS alumni, Friends' Board of Directors and members, and hundreds of community volunteers, we welcome this opportunity to begin the process of reversing the deterioration at the MHS campus, and beginning its rebirth as a beautiful, inspiring, social services and education facility.

Plans are well underway for an exciting MHS reunion event for all alumni of the H'poko school, scheduled for September 14, 15 and 16, 2007. Led by co-chairs Richard Higashi and Rodney Inciong, the '07 MHS Reunion Committee expects hundreds of alums and their families to attend the three-day event, where they will enjoy memory walks and historic displays, view preservation progress at the administration building, talk story with classmates, teachers and friends, share MHS memorabilia for the Archive, savor a luau lunch, dance to the mellow music of earlier school days, and recapture the spirit of our dear island school.

Plan now to attend this once-in-a-lifetime event: The Fall issue of SILVERSWORD will have more information, and Registration Forms will be mailed to all on Friends' data base in January 2007. Updates will be posted on the Friends' website starting in January.



**FRIENDS' FIRST ANNUAL MEETING...**MHS alumni gathered at the Cafeteria building on Saturday, June 8, for an afternoon of fun, discussion, cheers and music, election of Friends' Board members, and updates on progress toward our goals. Led by "new" MHS grad, Maui Council member Mike Molina, who was a dynamic, funny Master of Ceremonies, and by Pearl Nishino, accompanied by musical duo Frank Domingo and Henry Molina, the alums and their guests sang and cheered in true MHS spirit! Maui Mayor Alan Arakawa shared his memories of student days at H'poko, and his hopes for the revitalization of the school. Following reports by President Barbara Long, and Board V.P. Jan Dapitan, a slate of Board members for 2006-2007 was elected. New Board members are: Council member Mike Molina, and Trevor Tokishi, Executive V.P. and CPA, Valley Isle Community Federal Credit Union.



**MHS ARCHIVE ROOM DEDICATED.** . .highlighting the Annual Meeting, the Friends' new MHS Archive Room was formally dedicated, in memory of 1938 grad, Ralph H. Kiyosaki. Funded by a generous donation by Robert and Kim Kiyosaki, the large, air-conditioned room contains shelving (for a future collection of SILVERSWORD Yearbooks, etc.), and a fireproof file cabinet (to safely contain - in archival condition - historic photographs, Hi-Notes, documents, maps and blueprints, and other materials pertaining to Maui High School's past.) Friends were honored to host many members of the Kiyosaki Family, who traveled to H'poko to participate and share in the blessing and dedication. TRUE BLUE FRIEND AWARD. . . A special award, to honor a Friend whose help has been uniquely important , was given to Friends' Board Member Ruth Mukai, for her amazing assistance with obtaining (and correcting) class lists for our database, and for her work as chair of the Annual Meeting Committee.



**ADMINISTRATION BUILDING NOMINATED TO STATE REGISTER OF HISTORIC PLACES.** . . We hope that, by the time you read this, the historic 1921 C.W. Dickey -designed MHS Administration Building will have been reviewed and nominated to the Hawaii Register of Historic Places. Preparation of the lengthy nomination forms was funded through the E.P.A. Grant, as part of the process of preservation and rehabilitation of this important building. We plan to submit the nomination for listing in the National Register as well, to assist in obtaining future rehabilitation grants. Listing provides recognition of its historic importance and assures protective review, as well as helping to preserve the heritage of Maui, our state and our nation.



**FRIENDS RECEIVE PRESERVATION AWARD.** . . Historic Hawaii Foundation selected Friends of Old Maui High School to receive a 2005-2006 Preservation Commendation award, because "the group is a wonderful example of the positive impact historic preservation can have in our communities." The annual awards are given to programs and organizations which demonstrate "outstanding achievement" in



Continued on pg. 3

# EPA CHIEF PRAISES GRANT PROJECT, PROGRESS

Community Work Day and Friends of Old MHS welcomed Stephen Johnson, administrator of the U.S. Environmental Protection Agency, and EPA staffers from Washington D.C. and San Francisco at a ceremony at the school in February. Remarking on the \$248,000 grant, Johnson noted "the school's history will be preserved and enhanced by this project", and explained how EPA funds will be used by CWD and Friends to incorporate green building practices during the cleanup, preservation and rehabilitation of the 1921 administration building.

Initiated by Sen. Daniel Inouye, the EPA grant has begun to make noticeable changes at the school. Beginning in February, a hard-working team has removed tons of rubble, recycled stacks of re-usable lumber (former joists, beams and classroom wall material), and hacked away at tree branches and roots taking over the interior. A catchment system, with 2500-gallon tank, delivers non-potable water from classroom roofs to the Cafeteria. Weeds, shrubs and invasive trees are being cleared, and their green waste will become landscape mulch, for use at the site.



Community Work Day partners with Friends, bringing its volunteer coordination expertise to the revitalization process. Working with alumni, and community and business volunteers, CWD works to protect and preserve the beauty of the H'poko campus, to bring it back to life through creation of the Patsy Takemoto Mink Center.

If you would like to help with cleanup, maintenance or other safety and security projects at MHS, please call Jan Dapitan at CWD, 877-2524.

---

Continued from pg. 2

preservation, and play a significant role in Hawaii's physical and cultural heritage." Friends was represented by V.P. Jan Dapitan at the HHF awards ceremony on May 18, 2006. We thank HHF for this honor and for the recognition of the hard work, dedication and determination of so many alumni, members, volunteers and community supporters.

**A MUSICAL MYSTERY.** . . We have discovered, deep in the files of the MAUI NEWS, an article from June 27, 1919, "First Baccalaureate Of Maui High Given". It reports: "The school song, which was composed by Mlle. Cecyl Holliday, was used as a processional with a large chorus of students." The paper printed the poem by Mlle. Holliday (who may have taught French at the school), and hence the mystery! The .fourth line of the first verse was originally written: "And in this our **stride** for knowledge Leave no task undone." All current versions of the Alma Mater have "strife", rather than "stride". When did this happen? How did it happen? D is next to F on the keyboard... was it a typing error? Or did students make the change intentionally, because they felt school - even at beautiful Maui High - was more arduous work than a mere stroll in the sun? Should it be changed back to the original? What do you think? Please let us know if you prefer STRIDE, or the less-happy version, STRIFE. Continued on pg. 4

## PATSY MINK'S CHARACTER AND GOALS SHAPED AT MAUI HIGH

Patsy Takemoto's years at MHS, from 1941-1944, were a formative experience in her life, according to the narrative in the Nomination Form submitted to the Maui Cultural Resources Commission, then to the State and National Registers of Historic Places. Researching public and private sources, news-media, speeches and published accounts, historian Don Hibbard's account of Patsy Takemoto Mink's school days reveals the positive impact that teachers and classmates played in the creation of her lifelong commitment to equality of opportunity for all, and her leadership in the fight for women's rights and education.

MHS Principal Malcolm Clower "played a very significant role in my development---my self-confidence as a person, Patsy was quoted, in a

1994 book "A Heart in Politics". "It made no difference to him that I was a girl student. He never indicated the slightest preference, in deciding various tasks--that it had to be given to a male or that it couldn't be done by a female. I think it was a mark of exceptional ability on his part to rise above the normal stereotypes of the day."

Today Patsy Mink's legacy survives at every school and college campus in America. She was the force behind Title IX -- the bill that created an earthquake in women's and girl's lives, not only by transforming their participation in high school and college athletics, but changing the way society perceives women and helping to end sex discrimination.

MHS Freshman Class Officers 1941



Harriette Holt, President; Stanley Miyagawa, Treasurer  
Patsy Takemoto, Vice President; Elaine Kawano, Secretary

lege campus in America. She was the force behind Title IX -- the bill that created an earthquake in women's and girl's lives, not only by transforming their participation in high school and college athletics, but changing the way society perceives women and helping to end sex discrimination.

---

Continued from pg. 3

**MAHALO TO QUIZ RESPONDERS, ARCHIVAL ITEM DONORS.** . . Thanks to the many of you who sent answers to the questions in the last SILVERSWORD. The '47 football team was heading to Honolulu to play the Kamehameha Warriors: Sabers beat the Warriors: 14 to 13, according to Donald Ah Loy. Yaeko Sasaki identified Mr. Gallman's dog, Topper. Noboru Ono wrote a long, interesting letter, and Helen Yamashiro Otani correctly identified the old Cafeteria and campus police station and boy's rest room. She shared memories of Patsy Mink and the H'poko community. Ernest Kajihara sent his answers, as did many others. BUT we still don't know about the MHS Radio Broadcasting System, or who were the Howling Hundred.

We have been grateful to receive MHS items for the Archive collection. Mary G. Phillips, MHS '48, sent some photos, including Junior Prom Court. Louis Dolim (MHS '48) sent 1945, 1946, 1947 and 1948 SILVERSWORDs. Norma Medieros Pendleton sent some wonderful photos of her class of 1939 reunion, and pictures of classmates, the '37 MHS Band, and the Girls' Swim Team and more, many annotated with names. We received more SILVERSWORDs from Jan Priest Wysard, and a 1960-61 HANDBOOK from Frank Domingo. A plan and schematic of the MHS Citrus and avacado Orchard was presented by Agriculture Teacher Noriyuki Ueoka, showing plantings in 1956-1958 of dozens of trees: Mr. Ueoka and his wife taught at Maui High for many years, and are alumni as well. We hope to locate the trees that survive, and help them live and fruit for many more years, as a legacy of those earlier days. Robert H. Hughes, MHS '34, donated a copy of the 1963 Hi-Notes Supplement, which has been very helpful in compiling the history and nomination form for the Administration Building. Mahalo nui loa to you all, and to those who have sent and will be sending their cherished memorabilia for the old Maui High School Archive collection.



## President's Memo

### *The Spirit Lives On!*

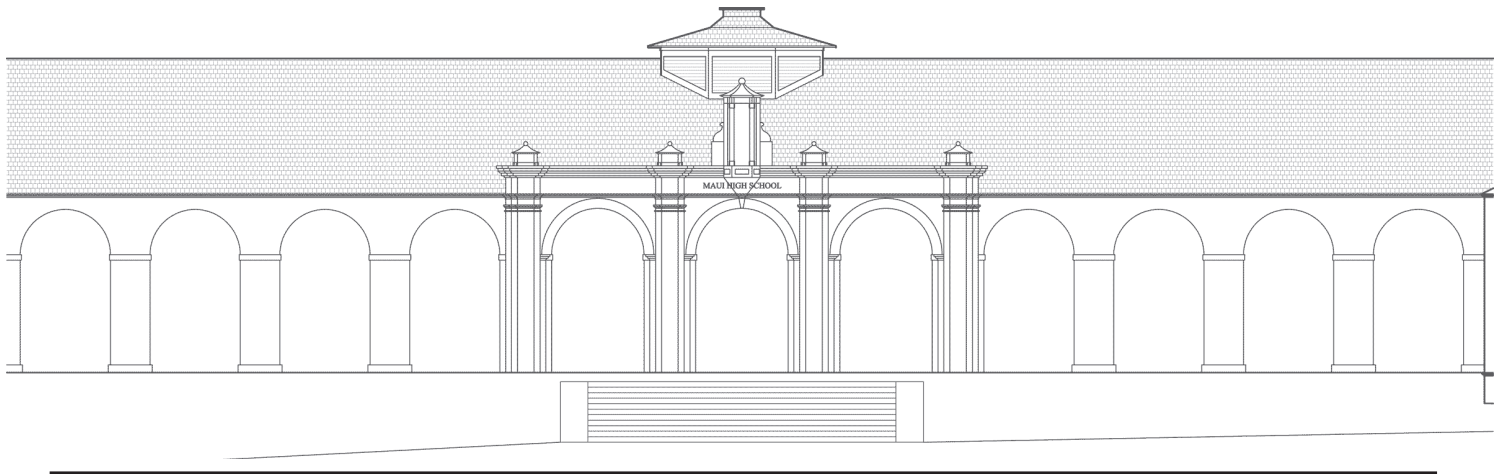
I am amazed at the power of the MHS spirit! Though this school has not seen a student for 35 years...though its buildings are (to put it mildly) decrepit, its campus weedy and overgrown, and its surroundings fields of cane instead of plantation camps, the love and devotion MHS alumni have for their alma mater is awesome and inspiring!

That spirit has made possible much accomplishment in just a short time, as we work toward our goals to preserve, rehabilitate and re-use the historic site as a dynamic community education and social services facility. As membership donations, in-memorial gifts, and letters of support come in, I have been moved by your expressions of

what MHS meant - and means - to you. For example, Henry K. Akana, Jr. "Sheriff", Class of 1951, wrote: "...all of us graduates are very impressed with what you and your Committee are doing to preserve our heritage and our legacy. As we grow more "makule", your efforts make everything fall into better perspective and appreciation for what we once were, aspired to be, became, and are, now. It all goes back a long way to our "roots"...on an isolated piece of volcano in the Pacific, OMHS was our "home away from home."

Mahalo for your support and your spirit! Please continue to share with Friends your memories of school days, your thoughts about the impact old Maui High had on your life, and your hopes for the future of this beautiful, historic and significant school.

*Barbara Long*



## OUR LIST OF MEMBERS AND SUPPORTERS GROWS AND GROWS...

Hundreds of MHS alumni and supporters have generously sent donations to help Friends of Old Maui High School achieve our goals. The following list (through May 15th, 2006), will soon be too long to publish in these pages. Please check our web site at [oldmauihigh.org](http://oldmauihigh.org) for all future updates of the ever-growing-list. Will your name be on it?

### FRIENDS OF OLD MAUI HIGH SCHOOL MEMBER LIST

**1921** In Memory of Shigeru Okuno **1932** Nora Goodness; In Memory of Tom Tagawa **1933** Roy Savage **1934** Robert Hughes; Munaki Morimoto **1935** Kathryn Savage Cameron; Shizuko Iwamoto Fukutomi; Kunio Ogawa; Cherry Kiyosaki Sakakida; Chiyoko Ohata Sue **1936** Takeshi Omuro **1937** In Memory of Alice Kaoiakamanu Cummings; Mabel Inada Ito **1938** Asako Kato; Clifford Kobayashi; Haruyo Morikawa Kotake; Lillian Watanabe Maeda **1939** Nora Abe; Leslie Araki; Leonard Ching; Sadako Katekaru Hayashida; Shiro Hironaka; Takeyo Sakai Ishikawa; George and Fumiko Kaibara; Melvin and Nancy Miyake; Larry Miyashiro;

Alfred Moniz; Harold Nishihira; Fusayo Okita; Edith Fukunaga Omuro; Miyoto Onaga; Champ Ono; Charles and Norma Pendleton; Tsuyako Murakami Sakagawa; Mary Soon; Edith Sugano; Humie Tanaka; Marjorie Takishita Tanoue; William Bill Tavares; Laura Wical; In Memory of Jan Yoshizawa **1940** Clytie Rocha Hewlett; Dawn Trask Howell; Howard and Shirley Murakami **1941** Alma Mae Johnson Bourke; Andrew Ortiz; Yoshito Inamasu **1942** Edward Tamayose; Edward Tamayose; In Memory of Kaoru Watanabe; Sharon Matsuoka Yonamine **1943** Jeanette Horita Fujii; Thelma Funayama Hamada; Jiroku and Alice Imada; Kenneth Ito; Dora Arakawa Jinohara; Higashi Kawai; Robert Kiyosaki; Henry Kono; Susan Yang Marcotte; Masao Motooka; Torao Mukai; George Nakasato; Tomoko Ohata; Ruby Okafuji; Edith Suzuki Saiki; Grace Saito; Kosei Shinsato; Nobuo Suda; Isamu Takahashi; Fumiko Elaine Tanimoto; Yukie Kigawa Tsukamoto; Margaret Okumura Unemori; Takeo Watanabe; Eloise Chang Wong; Don Yamaoka; Bessie Okazaki Yamashiro; Yaemi Yogi; Mamoru Yokoyama; Florence Tanaka Yotsuya **1944** Barbara Cook; Paul Dang; Harriette Holt; Jennie Bak Ito; Rita Vares Jurin; Betty Tamanaha Kegley; Josephine Kehoe; Mitsuo Kobayashi; Bessie Kono; Jane Shishido Lau; Sumi Yoshizawa Makey; Shoto Ogata; Shigeo Okuda; Janet Ratray Page; Yukiko Sato; Janet Shibata; Jerry Shishido; Eugene Takemoto; Sadae Uyeno; Henry Vincent, Jr; Robert Watanabe; Sueki Yamamoto; Koichi Yoshihara **1945** Emily Ah Pang Akaka; Alice Yamashiro Arakawa; Marjorie Coleman Brookman; Walter Cravalho; Consuelo Prito Edquiban; Hana Gabrielson; Sylvia Harima; Sumiye Horiuchi; Edie Hubanks; Richard Ikeda; Bernice Higa Isagawa; James Barney Itamura; Teruo Kakihara; Alice Kono; Elaine Kumabe; Mac and Judith Magarifuji; Bernice Takahashi Nagato; Larry Nakamura; Ralph Nikaido; Roy Oshiro; Donald Ouchi; Betsy Poentis; Sueno Murakami Saito; Charlie Tamashiro; Fred Trask; Hisako Hiromoto Wakashige; Lin Chun Wong; Alice Suzuki Yamada; Esther Abe Yokoyama; Patsy Shiroma Yoshimura; Sally Veoka Yoshina **1946** Charles Crane; June Imaye Fukuoka; Tatsumi Imada; Kimiko Inamasu; Amado Malabon; Sadako Nikaido; Rose Arai Ohashi; Doris Saiki Shigeta; Gary Shishido; Alice Sugimura; June Kiyosaki Takano **1947** Alfred Abe; Sandra Shishido Choi; Martin Engoring; Lillian Fuchikami; Jean Miyashiro Gibo; Charles Gima; Molly Kono Hamanaka; Kiyoto Stella Hashimoto; Elaine Shimabuku Higa; Patsy Higa; Mae Hirata; Yukino Sato Isobe; In Memory of Harriet Watanabe Isogawa; Frank Kinnison, Jr; Tamateru Kodama; Rene Kurasaki; Alfred Lacio; Jayne Machida; Howard Matsuura; Kiyoto Matsuura; Betty Takaazu Miyachi; Tom and Ruth Mukai; Harold Nako; Henry and Yukie Kametani Nihei; Esther Nishijo; Edward Nishimura; June Rekward; Stanley Shigeta; Betty Tanaka Shishido; Stephen Tam Sing; Paul and Nancy Yamashita Tanaka; Lois Takeyesu Tyler; William and Lucy Wong; Yoshio Yamanuha; Marian Yokomoto; Akira and Betsy Komoda Yoshida; Alyce Matsumoto Yoshido **1948** Clara Rodrigues Aucker; Ty Baldwin; Camilla Paion Carino; Niles Cravalho; Doris Char; Lourdes Ribucan Cordeiro; Louis Dolim; Betty Yap Dumaran; Elaine FooSum; Jane Fukunaga; Mae Ujjiye Furumoto; Sadato Hamaguchi; Wayne Higa; Elver Higashi; Ethel Sakamoto Ho; Harold Honda; Harold Honda; Isama Iwaishi; Norma Joaquin; Tom Kato; Miyuki Yamamoto Kimura; Mildred Kitagawa; Betty Oshiro Kurisu; Al Macapulay Clara Chinnohara Matsumoto; Harold Matsumoto; Tsuzuki Matsumura; Robert Medeiros; John Mihara; Charles Mounce; Akira Mukai; Robert Murakami; Amy Yamashiro Murashige; Robert Murakami; Amy Yamahiro Murashige; Jennie Nakamoto; Ken and Alice Fujibayashi Nako; Katherine Sasaoka Nakasone; Helen Motooka Nakashima; Sam Ohigashi; Noburo Ono; Harry Harukichi Oyafuso; Daniel Rollins; Judy Sakai; Robert Sakurauchi; Yaeko Mabe Sasaki; Noburo Sato; Roy Shimabukuro; Takeo Shishido; Norman Taira; Elaine Taketa; Shigeo Wakayama; Edith Yamashiro Wall; Nancy Tamayose Yamashita; Jeanette Kiyabu Yee; Jack Yoshimi **1949** In Memory of Antonio Acoba; Donald and Hiilei Ah Loy; Grace Takahashi Arata; Louis Baldovi; Jane Matsuura Egi; James Gima; Edward Hayashi; Eunice Auwelo Higa; Ruth Okumura Iriguchi; Harold Kametani; Wayne Kiyosaki; Stanley Kiyotoki; Alice Kushimaejo; Jimmy and Lucille Lawrence; Jane Lo; Robert Matsumoto; Leilani Matsumura; Patsy Shishido Matsumura; Bobbie Coleman McDonald; Lorrain Kanemoto Morikawa; Doris Ishida Nagaishi; Warren Nishida; Jane Okano; Donald Okuda; Wallace Oshiro; Mary Amaral Phillips; Clifford Saito; Dennis Shiroma; Jane Araki Sorensen; Hideko Tamanaha; Ruth Asato Uyechi; Calvin and Jenny Yamamoto; Eugene and Jean Shiraishi Yamamoto; Takeshi Yamashiro; Harriet Ogata Yoshimori **1950** Wallace Arakawa; Alice Yemoto Brooks; Catherine Takita Ferguson; Florence Nakatsukasa Fukumoto; Thelma Roman Gates; Bertha Cabrinha Gatti; Leslie Goshi; Margaret Hanzawa; Donald Haruko; Ann Arakawa Hashimoto; Betty Hida; Peggy Honda; Gladys Venhuizen Lampkins; Lei Honda Masuda; Kazuo Matsuura; Richard Matsuura; Helen Mercedes; Robert and Amy Mihara; Richard Minobe; Willard and Dixie Miyahira; Toshie Nako Herbert Ohigashi; Yukio Okuda; Edward Otsu; Pedro Rivera; Leonarda Lacio Rollins; Stan Saito; Charlotte Wakugawa Sakamoto; James Sato; Shirley Takahashi Sexton; Stanley and Sally Shimabukuro; Ruth Ikemoto Shigenaga; Michio Shishido; Teruko Smith; Toshiko Shirokane Sugiki; Helen Miyashiro Tamashiro; Edward Tanimoto; Robert Tsuji; Donald Watanabe; Hiroshi Yamauchi; David and Betty Yap; Stephanie Satoko Yayoshi **1951** Henry Akana; Patricia Cabral; Janet Miikai Cho; Linda Boteilo Cravalho; Juanito Jon Cua; Robert Higa; Daisy Ishibashi; Nancy Ishii; Janet Ah Loy Kamana'o; Shishido Kazuo; Mildred Isobe Kinoshita; Nobuko Obayashi Kuhn; Fukuichi Kusakabe; Edith Matsumoto; Ruth Ishida Matsuura; Mildred Miyashiro; Sadao Nakasone; Kinuye Kijinami Nihei; Jeanette Itakura Okuda; Patsy Sato Ota; Aline Hamaguchi Rolaff; Yofu Sakane; Tom Shimabukuro; Sue Sakai Soga; Mitzi Matsubara Taketa; Setsuko Yamashita; Stan Yumen **1952** Jean Yoshizu Akagi; Charlotte Nagata Akiyama; Shirley Anderson; Noboru Hironaka; Irene Kajihara Imada; Eileen Sakagawa Kishinami; Peggy Nagata Maruoka; Allen Matsunaga; Grace Kigawa Murakami; Janet Kitagawa Moore; Hirotsada and Sally Murakami; Ruth Umetsu Nakao; George Nakasone; Edward Ogasawara; Tom Oshiro; Paul Sakuma; Kenneth Sato; Mae Pung Yoshioka; Carol Shirokane Yoshiyama **1953** Eleanor Nishimoto Arakaki; Atlas Arakawa; Robert Davis; George Enoki; Kathryn Honda Fujioka; Dorothy Genn; Shizue Jenny Yamashita Hedani; Ralph Ichikawa; Jane Inouye; Julia Malaqui Ishii; Gladys Isobe; Nobuo Kanemoto; Yvonne Kishi; Roy and Virginia Nakatsukasa Kitagawa; Harry Kiyoto; Wayne Kobayashi; Nobuyoshi Komoda; Peter Leong; Clarence Matsumoto; Reiko Kuwashima Matsunaga; Paul Matsuoka; Lawrence Mercedes; Helen Kunishige Mimura; Harrison and Helen Miyahira; Betty Akemoto Mizuguchi; Henry Monden; George Nagano; George Nakamura; Larry Nakashima; Matsuo Okamoto; George Otani; Pedro Padron; Hiroko Marian Pharr; Herman Sugimura; Iwao and Sandra Suzuki; Sally Nagata Viveiros; Stanley Wakakuwa; Adelina Walsh; Robert Yamashida; Ellen Maalea Yap; Al Young **1954** Manuel Amoral; James Baldovi; Alexander Bantilan; April Corioso; William Dease; Grace Saito Fujimoto; Ernest Kajihara; Nora Morita; Helene Yamashiro Otani; Alice Yogi Sasaki; Don

FRIENDS OF OLD MAUI HIGH SCHOOL

P.O. Box 792165 Pa'ia, HI 96779

Friends of Old Maui High School works to preserve and revitalize the site, structures and spirit of the old Hamakuapoko school. Your tax-deductible gift enables us to provide special events, information via publications and community education, volunteer programs and coordination, and on going project and grant management. Your support is essential to the realization of Friend's goals, and creation of the Patsy T. Mink Center at the MHS campus

NAME (please print) \_\_\_\_\_  
First Maiden Last

ADDRESS \_\_\_\_\_ CITY \_\_\_\_\_ STATE \_\_\_\_\_

ZIP \_\_\_\_\_ MHS ALUMNUS, Class of 19 \_\_\_\_\_

MEMBERSHIP DONATION - please make checks payable to Friends of Old MHS

New \_\_\_\_\_ Renewal \_\_\_\_\_

Individual/Family ----- \$15 and up----- \$ \_\_\_\_\_

Business/Corporate ----- \$35 and up----- \$ \_\_\_\_\_

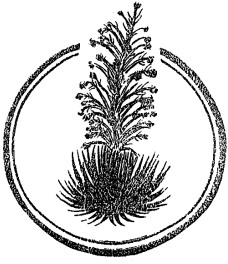
Gift in memory of \_\_\_\_\_ \$ \_\_\_\_\_  
Name MHS Class

Friends of Old Maui High School is a 501(c)3 organization. TOTAL AMOUNT ENCLOSED \$ \_\_\_\_\_

Donations are tax-deductible as allowed by law.

Tax ID # 20-1622825

- .....
- Shimabukuru 1955 Ida Hokoana Adelstein; Sally Ishii Ayabe; Fred Bush III; Robin Zane Canto; Rebecca Quitazol Correa; Grace Kekiwi Davis; Ramsay Downey; Delphina Golis Fuller; Sally Katena Gima; Edith Adachi Goya; Randy Honda; Ralph Honjo; James Ichikawa; Kazue Yamamoto Kadosaki; Tom Kakihara; Evelyn Poaipuni Kalehuawehe; Donald Karimoto; Ralph Kehano; Shirley Ann Ueoka Kimizuka; Winifred Matsui Kubo; Gerald Machida; Marian Murakami Maruyama; Leslie Matsubara; Ethel Masuda Matsuo; Alice Pagan Medeiros; Merle Seki Momita; Dawn Matsuoka Moroye; James Nakasone; Clarence Nakatsukasa; Florinda Cambra Nunes; Gladys Karakawa O'Connor; Howard Oshiro; Joe Oshiro; Judith Onaga Oshiro; Francis Otsu; Rita Palafox; Itsue Kawachi Pojas; William Razo; Catherine Amorn Rubino; Spencer Sakae; David Sakai; Doris Matsumoto Sakaida; Carol Honda Takase; Betty Takata; Florence Nouchi Takayama; Judy Ikemoto Takayama; William Tamanaha; Lorraine Sato Tamaribuchi; Larry Tomita; Leona Rocha Wilson; Betty Nagata Wong; Jan Wysard; Leslie Yamanaka; Kenneth Yap; Arline Hironaka Ytuarte; Alvin Yumen 1956 Fred and Leonarda Asuncion; Jane Miyashiro Serikaku 1957 Gordon Fujiwara; Kay Hanano; Patricia Amborse Hockett; James Ibara; Roy Kaneshiro; Daniel Kawabe; Howard Nishimoto; Rita Baldovi Nordquist; Joyce Harada Patrick; Richard Suzuki; Glenda Ueoka Ujjiie; Patsy Nishihara Yoshimura 1958 Anonymous; Jane Tamanaha Au; Sylvester Baldovi; Corrine Cambra Blalock; Edna Ogata Crawford; Edwin Doi-Davis; Alfred and Vickie Domingo; Esperanza Engoring; Alfred Gima; Paul and Patsy Hasegawa; Robert Higa; Janet Honda; Kenneth Mijo; Faith Sato Miyahira; Amy Yonashiro Mizuno; Wallace Murakanz; Barbara Enomoto Nishijo; Sandra Sakae Nishimi; Luella Nishimoto; Robert Oyafuso; Stephen Petro; Edwin Polendey; Harmony Cummings Stahl; Laura Bulda Swinth; Mollie Ganiko Tamashiro; George Tanahara; Charmaine Tavares 1959 Anonymous; Charles Barclay; Amy House; Clarence Ishizu; Myrtle Masuda Kuramoto; Henry Lopes; Pauline Ambrose Lovitt; Janet Nakashima; Barbara Carvalho Silva; Harry and Janet Suzuki; Sandra Tengan Suzuki; Ester Takakura; Wayne Takakura; Patsy Okazaki Wong 1960 Melvin and Flora Amaral Aina; Muriel Ogata Aizawa; Joy Watanabe Doi-Davis; Bert Inouye; Carol Koga; Ronald and Stephanie Sakaki; Gilbert Takahashi; Irving Uradomo; Philip Valentine 1961 Leslie Cabrinha 1962 Ben Almasin; Morris Asato; Santos Bacos; Gerri Cantwell; Yvonne Doi-Davis; George Fukushima; Teresa Kakugawa; Leila Kaleialoha; Lillian Isobe Niimi; Arthur Onikama; John and Melinda Peterson; Robert Rico; Homer Shiroma; Remedios Tamayo; Warren Tanaka; Steven Uehara; Eileen Sakata Williams 1963 Tung Kyau Chong; Harry Dobashi; Betty Suzuki Fujiwara; Roger and Gail



FRIENDS OF OLD MAUI HIGH SCHOOL  
P. O. Box 792165, Paia, HI 96779  
<http://oldmauihigh.org>

NON-PROFIT ORG.  
U.S. Postage PAID  
Puunene, HI  
Permit no. 73

~~ PRESERVING THE PAST TO ENHANCE THE FUTURE ~~

#### Board of Directors

**Barbara Long**  
*President*

**Jan Dapitan**  
*Vice President*

**Ruth Mukai**  
*Secretary*

**Ruth Tokishi**  
*Treasurer*

**Gwen Hiraga**  
**Jean Igarashi**  
**Kathy McDuff**  
**Mike Molina**  
**Herman Nascimento**  
**Paul M. Ueoka**

**Jane Miyahira**  
*Recording Secretary*

**Alan Tengan CPA**  
*Accountant*

**Sherry Yamashita**  
*Data Management*

**Rich Lucas**  
*EPA Project Assistant*

**Gill Brooks**  
*Web Master / Newsletter*

Hasegawa; Carol Mae Watanabe Takahashi; Florence Takaki Utsumi **1964** Theresa Freitas Shaw; Diana Idemoto Tanaka **1965** Evan Asato; Ruddy and Linda Bareng; Barbara Gusman; Gail Hamai; Lorraine Ho; Faith Ito; Gloria Malunao; Francis Matsuda; Eva-Juliete Matsuura Miguel; Eileen Sato; Carina Caires Shiota; Daniel Shishido; Carl Watanabe; Danny Yamamura **1966** Anonymous; Jackie Pias Carlin; Al Imamura; Dennis Ishii; Curtis Lee; Lyman Morikawa; Eloise DeRego Okimoto **1967** Iris Vares Blessinger; Dianne Matsuoka Figge; Grace Ishii; Nestor Soliven; Paul Ueoka; Catalino Villanueva, Jr **1969** Alan and Ann Arakawa **1970** Gene Saito; Linda Misaki **1971** Roberta Molina Souza **1984** Joy Tamayose A&B Foundation; Neil Abercrombie; Jean Alexander; Roy Arakawa; The Fred Baldwin Foundation; Robert Bluh – Fairfield Resorts; William and Joyce Calvert; Tom Cannon; Meredith Ching; In Memory of Charlie Dapitan; Ruth Fernandez; Robert Gilroy; Russel and Muffy Gushi; Marvin Hamai; D.L. Harris; Chris Hart; HEI Charitable Foundation; Eloie Higa; Karen Higa; Gwen Hiraga; Wilfred Ikemoto; Roko Ishizuka; W. Kaholokula; Frances Kakazu; Jean King; In Memory of Tom Kiyosaki; Jon and Roz Lightfoot; Ellen Loo; Kay Makii; Martha Martin; Akiko Claudia Matsuda; In Memory of John Mink; Ricky Momota; Laurel Murphy; Yvonne Nagoshi; Ione Nakasone; Ray Nitta; Hiroko Noda; Lillian Oshiro; James Ouchi; Dr. William and Ann Patterson; Glenn Shimabuku; Sorority of Gamma; In Honor of David Souza; Evelyn Suno; In Honor of Masao and Ruth Takaki; Joy Tamayose; Doris Uchida; Thomas Umetsu; Miyoko Florence Wakabayashi; Estelle Yagi; Constance Yamamoto; Judith Yoshida

Graphics and composition for this issue of  
**SILVERSWORD** have been funded through our EPA grant.  
Other costs and mailing have been funded through donations  
by Friends members and supporters. Mahalo!