

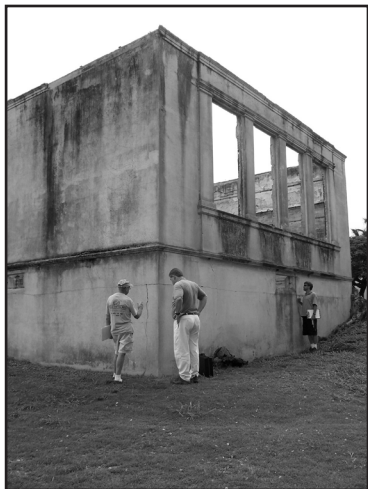


Friends of Old Maui High School

SILVERSWORD

Winter 2006

Come to the MHS Alumni REUNION AT H'POKO September 14th, 15th & 16th, 2007



It's time to register for the long-awaited Maui High School Alumni Reunion! We're expecting thousands of MHS Alums and their families to attend the exciting three-day event, so don't delay -- send in the Reunion Registration Form on Page 7 -- and make your travel arrangements soon! You don't want to miss this once-in-a-lifetime MHS event!

The Reunion Committee and Class Contacts have been hard at work, under the guidance of Co-Chairs Rodney Inciong and Richard Higashi, planning a memorable celebration. Friday's schedule includes informal campus memory walks, registration and T-shirt pickup, opportunities for off-campus Class Reunions, and photo ops. Saturday, September 15 will include all the above plus a sumptuous Luau Luncheon, Pep Rally and entertainment, and a chance to re-experience the swinging sounds of the 40's and 50's as the Cafeteria becomes a dance venue! Sunday morning the Friends of Old Maui High will host a Continental Breakfast, as alumni gather for a Memorial Service to honor classmates and MHS faculty members.

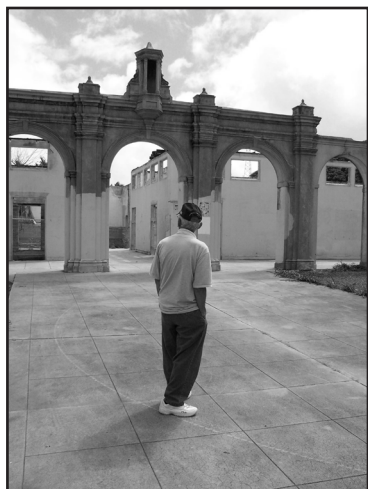


A professional photographer will be on hand for formal Class photographs, and throughout the weekend, volunteers will be accepting MHS memorabilia, year books and other items for the Archive Collection.

BROKE DA MOUTH LUAU MENU MENU

Kalua pig
Chicken long rice
Squid luau
Lomi lomi salmon
Rice, sweet potato

Macaroni-potato salad
Poi
Poki
Fresh Maui pineapple
Beverages



PHOTOS (from the top)

- * Architect Hans Riecke and structural engineer Walter Vorfeld carefully examine MHS Administration Building for stability and strength.
- * Interior of Boys' athletic locker, built in 1952 from modified quonset.
- * Visiting from Los Angeles, 1943 grad Mamoru Yokoyama pauses to recall his days within the formerly ivy-covered walls.

“MOTHBALLING” PROCESS TO PROTECT, PRESERVE MHS ADMINISTRATION BUILDING



The historic 1921 MHS Administration Building is now ready for the next step in its rehabilitation and re-use as the Patsy Takemoto Mink

Center. After months of arduous work by the EPA-funded debris removal team, the beautiful building shows off its architectural “bones”. The graceful archways with their Mediterranean-style spires show Architect Charles W. Dickey’s classic design details.

Thick concrete walls with their smooth coat of stucco create strong shadows, while the vistas from doors, windows and passageways remind us of the school’s purpose -- to inspire generations of Maui students to learn, excel, and achieve.

With the building’s historic stature assured by its recent placement on the Hawaii Register of Historic Places, measures have begun to protect and preserve the structure. While long-range planning is underway to determine the future uses of all campus buildings, the Administration Building must be surveyed, protected and stabilized.

With EPA grant funds, a structural engineer and an architect specializing in historic preservation have been selected, to determine the best process for “mothballing” the MHS Administration Building. After careful evaluation to assess the strength of the walls, engineer Walter Vorfeld and architect Glenn Mason will design stabilization measures and prepare construction documents. These will include a permanent roof structure and plans to weatherproof the large building, with the goal to protect it from the elements until master planning for the site is completed. Cost estimates for the “mothballing” will also be provided by Mason Architects, so that Friends and partners, Community Work Day Program, can quickly seek the necessary funds.

The Friends are very grateful to many who have helped move this process along: Our sincere “Mahalo” to Maui architects Hans Riecke whose professional expertise from the start has been very valuable and Calvin Higuchi, for completing the measured drawings and recreating the roof; to Chris, Kai and Robert, [members of the debris team] as well as Project Assistant Rich Lucas for dedication to the enormous task of clearing the building - and bravery in the face of swarms of bees! And to the many volunteers and generous Maui businesses who provided debris removal equipment and aid, including Maui Demolition and Construction Landfill and Maui Trucking. Special thanks to Jan Dapitan, Community Work Day Program director and her staff for their unflagging support and assistance!

50TH REUNION FOR MHS CLASS OF 1956 FEATURES MEMORIES, UPDATES & FUN

Gathering on Saturday, October 21 at the Cafeteria, some 35 alumni from the MHS class of 1956, with their spouses, spent several pleasant hours renewing campus memories, friendships and tales of bygone school days.

Class Reunion organizers Barbara Tanner and Leonarda Asuncion followed up a Friday night class dinner with the MHS campus event, which included a bento lunch and talk by Friends’ President, Barbara Long, to bring the alums up to date on activities and plans for the school. A check for \$200 was presented by the Class of 1956 to the Friends of Old Maui High School, which will help purchase more tables and other supplies to enhance future events in the Cafeteria. After the lunch, members of the MHS Class of 1956 and their spouses posed on the steps of the Administration Building for a 50th Reunion portrait.



MAKING IT HAPPEN

Volunteers, Donations and Grants are Keys to Preserving and Revitalizing Old Maui High

From the start, in 2003, Friends of Old Maui High School has been very fortunate to have the support not only of thousands of Alumni but also community and business volunteers. We have also received generous financial assistance from a two-year grant from the Environmental Protection Agency (EPA) obtained through Senator Daniel K. Inouye, for \$250,000, and a 2006-2007 grant for master planning and infrastructure assessment from the County of Maui, for \$275,000.

The grant funds are "restricted" -- that is, the funds must be used within a certain time period and only for the purposes specified in the grants. Friends works with Community Work Day Program (CWD) to plan, carry out and administer both grants, with oversight and advice provided by the Friends' Board of Directors and our finance professionals.

Thanks to hundreds of Alumni and supporters who have sent Friends' membership donations, the "unrestricted" funds received to date total more than \$75,000. Our annual non-profit organization tax returns show that Friends' expenditures of these funds are primarily for clerical support (bookkeeping, database and mailing list development) and communication with Alumni and the public (printing and mailing SILVERSWORD, displays, website, special meetings, etc.). Friends also utilizes unrestricted funds to repair and secure the MHS Cafeteria, purchase T-shirts, office supplies and other essentials, including a policy of Liability Insurance as required by the Maui County grant.

Friends and CWD strive for fiscal responsibility as we pursue the numerous tasks and requirements of the grants and our mission to revitalize old Maui High. The results speak for themselves! The buildings are now clean and secure, the campus is accessible and beautiful, with its lawns and mature trees flourishing. And

the rehabilitation of the historic MHS Administration Building is right on target!

Concurrent with development of preservation plans for the Administration Building through stabilization and "mothballing", work under the County grant has begun, to determine the long-range use and infrastructure needs of the entire 22-acre campus. While technically the State of Hawaii owns the MHS campus, the site has been under the jurisdiction of the County of Maui since a 1972 Executive Order. The Maui County Parks Department is responsible for oversight at present, with both Friends and CWD having a Right of Entry, or

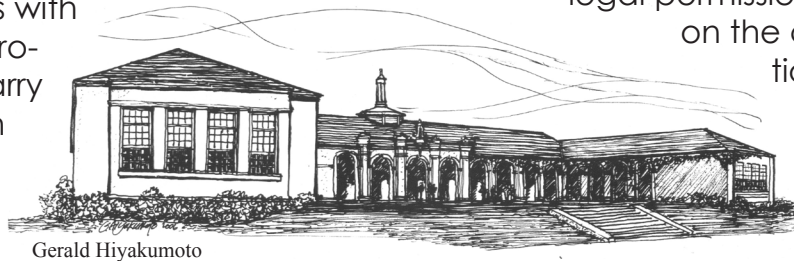
legal permission to enter and work on the campus for preservation and clean-up. We

coordinate that work through a County Task Force which includes members of the County's

departments of Parks, Water and Public Works, and is chaired by Alice Lee, director of Housing and Human Concerns.

The ultimate rehabilitation of the 1921 Administration Building is tied to the requirements and long-range use of the entire campus. Before final concepts and design for the Patsy T. Mink Center can be developed, its place in the campus - and the surrounding community - must be determined. County grant funds have begun this process. Friends is working closely with planners, engineers, community advocates and advisors to re-establish water, sewer and other needed infrastructure, assess the re-use of the many half-century old structures that remain, and creatively and sensitively plan for a revitalized campus facility that will serve community needs and still maintain the historic atmosphere and inspiring beauty of old Maui High.

Continued on page. 8



Gerald Hiyakumoto

Friends of Old Maui High School MEMBER LIST

The amazing support shown by MHS alumni has brought the total number of Friends' members' to over 860 (as of 10/31/06). We've had to reduce the type size to fit everyone into this issue of SILVERSWORD, but you can check the Member List out on Friends' website, too. Mahalo for your generous support! These funds help us keep you - and the community - informed, ensure the safety of our MHS Archive Collection, and bring us closer to preservation of Maui High and creation of the Patsy Takemoto Mink Center.

1921 In Memory of Shigeru Okuno **1927** In memory of Irene Costa by Bertha Carinha **1928** In memory of Mitsuno Fukuda by Kinuye Kijinami Nihei **1930** In memory of Laura Rocha Boteilho by Bertha Carinha Gatti; In memory of Msao Sone by Elsie Sone Okubo **1932** In memory of Eva Rocha Andrade by Nettie Rocha Dudley; Nora Goodness; Tom Tagawa **1933** Roy Savage **1934** In memory of Kiyono Fukuda Ebisu by Kinuye Kijinami Nihei; Robert Hughes; In memory of Edward Matsueda by Helen Yoshimura Matsueda; Munaki Morimoto; In memory of Hidea Nagata by Patsy Shiroma Yoshimura; In memory of Douglas Kazumi Otani by Akiko Kimura Uyeda; In memory of Hayano Fukuda Sugawa by Kinuye Kijinami Nihei **1935** Kathryn Savage Cameron; Shizuko Iwamoto Fukutomi; In memory of Hiroshi Magata by Ethel Magata; Kunio Ogawa; Cherry Kiyosaki Sakakida; Chiyoko Ohata Sue; Fumio & Betty Tanaka Tsuji **1936** Tokie Toyofuku Hidani; Takeshi Omuro; Lillian Okuyama Tada **1937** Sylvia Johnson Asch; Marian Matsumoto Chong Kee; Alice Kaioikamanu Cummnigs; Lucy Kanoho Hong; Mabel Inada Ito; Elsie Sone Okubo **1938** Asako Kato; Clifford Kobayashi; Haruyo Morikawa Kotake; Lillian Watanabe Maeda; In memory of Yoshi Hedani Terao **1939** Nora Abe; Leslie Araki; Leonard Ching; Mieko Fujinaka Crowell; Sadako Katekaru Hayashida; Shiro Hironaka; Takeyo Sakai Ishikawa; George & Fumiko Kaibara; Larry Miyashiro; Alfred Moniz; Harry Nakayama; Harold Nishihira; Fusayo Okita; Edith Fukunaga Omuro; Miyoto Onaga; Champ Ono; Charles & Norma Medeiros Pendleton; John Rodrigues; Tsuyako Murakami Sakagawa; In memory of Fujio Sone by Elsie Sone Okubo; Mary Soon; Edith Sugano; Humie Tanaka; Marjorie Takishita Tanoue; William "Bill" Tavares; Yaeko Hanzawa Umetsu; Laura Wical Yemoto; In memory of Jan Yoshizawa **1940** Clytie Rocha Hewlett; Harold Higa; Dawn Trask Howell; Kiyoko Kagoshima Kauhine; Beatrice Kimura; Norbiko Hedani Kimura; Gail Masuoka Kuramoto; Helen Yoshimura Matsueda; Helen Roach McCall; Howard and Shirley Murakami; Alice Arakawa Oshiro; Fumie Shimazu; Anne Medeiros Shine; Florence Suzuki Uradomo; Lilian Miyake Yamaguchi; Joyce Masuoka Yorimoto; In memory of Kanji Wakamatsu by Lillian Tom Chou & Henry Kuwae **1941** Alma Mae Johnson Bourke; Yoshito Inamasu; Ethel Magata; In memory of William Yaichi Nakamatsu by Agnes Nakamatsu; Andrew Ortiz **1942** Eleanor Hifumi Nishimura; Frederick Shumake; Edward Tamayose; Jane Saito Tanji; Shigeo Wakayama; In memory of Kaoru Watanabe; Sharon Matsuoka Yonamine **1943** Jeanette Lee Bow; Doris Abe Char; Jeanette Horita Fujii; Thelma Funayama Hamada; Jiroku & Alice Kusakabe Imada; Kenneth Ito; Dora Arakawa Jinnohara; Harriet Ito Kawai; Higashi Kawai; Robert Kiyosaki; Susan Yang Marcotte; Tetsuo Miyake; Masao Motooka; Torao Mukai; George Nakasato; In memory of Roy Nako by Jeany Tamashiro Nako; Ruby Okafuji; Katherine Shirma Riyu; Edith Suzuki Saiki; Grace Nakagawa Saito; Kosei Shinsato; Nobuo Suda; Isamu Takahashi; In memory of Judity Sone Tanigawa; Fumiko Elaine Tanimoto; Yukie Kigawa Tsukamoto; Margaret Okumura Unemori; Takeo Watanabe; Eloise Chang Wong; Don Yamaoka; Bessie Okazaki Yamashiro; Mamoru & Janet Yokoyama; Florence Tanaka Yotsuya **1944** Robert Arakawa; Wally Arakawa; Barbara Cook; Paul Dang; Alyce Suzuki Fujimoto; Harriette Holt Richard Inouye; Jennie Bak Ito; Thomas Kametani; Betty Tamanaha Kegley; Josephine Kehoe; Buddy & Mitsuo Kobayashi; Jane Shishido Lau; Sumi Yoshizawa Makey; Shigeo Okuda; In memory of Patsy Mink by Ruth Nako Endo; In memory of Donald Ratray by Janet Ratray Page; Janet Ratray Page; Yukiko Sato; Janet Shibata; Jerry Shishido; Eugene Takemoto; Sadae Uyeno; Henry Vincent, Jr; Robert Watanabe; Sueki Yamamoto; Koichi Yoshihara **1945** Emily Ah Pang Akaka; Alice Yamashiro Arakawa; Marjorie Coleman Brookman; Walter Cravalho; Julia Pires Duarte; Consuelo Prito Edquiban; Alice Saiki Fu; Hana Gabrielson; Sylvia Harima; Edie Hubanks; Bernice Higa Isagawa; James Barney Itamura; Teruo Kakiyara; Shoye Katena; In memory of Lawrence Kobayashi by Buddy & Mitsuo Kobayashi; Mac & Judith Magarifuji; In memory of Marian Mihara by Mac & Judity Magrifuji; Bernice Takahashi Nagato; Larry Nakamura; Ralph Nikaido; Akira Ogata; Harold Ohata; Roy Oshiro; Donald Ouchi; Betsy Poentis; Akio Saito; Sueno Murakami Saito; Evelyn Hirai Sano; Spencer Shiraishi; In memory of Nobuyuki Takesita by Thomas Kametani; Charlie Tamashiro; FreAlice Suzuki Yamadad Trask; Hisako Hiromoto Wakashige; Esther Abe Yokoyama; Patsy Shiroma Yoshimura; Sally Veoka Yoshina **1946** Charles Crane; June Inaye Fukuoka; Naomi Watanabe Hanada; Tatsumi Imada; Kimiko Inamasu; Amado Malabon; John Mink; Sadako Nikaido; Rose Arai Ohashi; Doris Saiki Shigeta; In memory of Donald Shishido by Patsy Rocha Shishido; Barbara Roach Strona; Alice Sugimura; June Kiyosaki Takano **1947** Alfred Abe; Mary Zane Ching; Sandra Shishido Choi; In memory of Vincente Dumarán by Betty Yap Dumarán; Martin Engoring; Lillian Nakamura Fuchikami; Jean Miyashiro Gibo; Charles Gima; Molly Kono Hamanaka; Kiyoto Stella Hashimoto; Elaine Shimabuku Higa; Patsy Higa; Mae Itamura Hirata; Masami Hironaka; Yukino Sato Isobe; In memory of Harriet Watanabe Isogawa; Shirley Ibara King; Frank Kinnison, Jr; Tamateru Kodama; Elaine Isobe Kurosawa; Alfred Lacio; Jayne Machida; Howard Matsuura; Kiyoto Matsuura; Betty Takaezu Miyachi; Jack & Chieko Miyake; Tom & Ruth Mukai; Masayoshi Nakatani; Harold Nako; Jeany Tamashiro Nako; Henry and Yukie Kametani Nihei; Esther Nishijo; Edward Nishimura; Mitsuru Owara; June Reikward; Stanley Shigeta; Betty Tanaka Shishido; Patsy Rocha Shishido; Stephen Tam Sing; Paul & Nancy Yamashita Tanaka; Staley Teruya; Majel Kagawa Tyler; Lois Takeyesu Tyler; Isamu Watanabe; Lucy Wong; Marian Yokomoto; Akira & Betsy Komoda Yoshida; Alyce Matsumoto Yoshino **1948** Clara Rodrigues Aucker; Ty Baldwin; In memory of Clarisa Cabrinha by Leslie Cabrinha; Joyce Coleman Calvert; Camilla Paion Carino; Niles Cravalho; Doris Char; Lourdes Ribucan Cordeiro; Natalie Ferreira Cordeiro; Louis Dolim; Betty Yap Dumarán; Ruth Nako Endo; Elaine FooSum; Jane Fukunaga; Mae Ujiye Furumoto; Sadato Hamaguchi; Elizabeth Maxwell Han; Wayne Higa; Elver Higashi; Ethel Sakamoto Ho; Harold Honda; Lucy Albaracin Horton; Robert Ikeda; Isama Iwaishi; Norma Joaquin; Tom Kato; Karen Kunishige Kimura; Miyuki Yamamoto Kimura; Mildred Kido Kitagawa; Beatrice Tam Kong; Betty Oshiro Kurisu; Chester Ling; Albert Macapulay; Clara Chinnohara Matsumoto; Harold Matsumoto; Tsuzuki Matsumura; Robert Medeiros; John Mihara; Charles Mounce; Akira Mukai; Robert Murakami; Amy Yamahiro Murashige; Robert Murakami; Amy Yamahiro Murashige; Haruko Yogi Nakamoto; Ronald Nakamura; Helen Motooka Nakashima; Katherine Sasaoka Nakasone; Ken & Alice Fujibayashi Nako; Noburo Ono; Harry Oyafuso; Daniel Rollins; Richard Saiki; Terry Sakaitani; Yaeko Mabe Sasaki; Noburo Sato; Roy Shimabukuro; Patsy Nakata Souza; Michael Suda; Norman Taira; Elaine Taketa; Lorraine Agena Teruya; Janet Sato Wakayama; Shigeo Wakayama; Edith Yamashiro Wall; In memory of Seige Watanabe by Isamu Watanabe; Nancy Tamayose Yamashita; Jeanette Kiyabu Yee; Jack Yoshimi **1949** In memory of Antonio Acoba; Donald and Hiilei Ah Loy; Grace Takahashi Arata; Louis Baldovi; Alice Shiraishi Ching; Jane Matsuura Egi; James Gima; Edward Hayashi; Eunice Auwelo Higa; Ruth Okumura Iriguchi; Harold Kametani; Stanley Kiyotoki; Alice Kushimaejo; Jimmy & Lucille Lawrence; Jane Nago Lo; Robert Matsumoto; Leilani Matsumura; Patsy Shishido Matsumura; Bobbie Coleman McDonald; Lorraine Kanemoto Morikawa; Doris Ishida Nagaishi; Warren Nishida; Jane Okano; Donald Okuda; Wallace Oshiro; Mary Amaral Phillips; Clifford Saito; Grace Shibana; Dennis Shiroma; Jane Araki Sorensen; Hideko Tamanaha; Ruth Asato Uyechi; Calvin & Jenny Yamamoto; Eugene & Jean Shiraishi Yamamoto; Takeshi Yamashiro; Harriet Ogata Yoshimori **1950** Wallace Arakawa; Alice Yemoto Brooks; Abel Cravalho; Catherine Takita Ferguson; Florence Nakatsukasa Fukumoto; Thelma Roman Gates; Bertha Cabrinha Gatti; Leslie Goshi; Margaret Hanzawa; Donald Haruko; Ann Arakawa Hashimoto; Betty Hida; Peggy Honda; Robert Kina; Gladys Venhuizen Lampkins; Lei Honda Masuda; Kazuo Matsuura; Richard Matsuura; Helen Domingo Mercedes; Richard Minobe; Willard & Dixie Miyahira; Stella Yamanoha Nakamura; Toshie Nako; Adam Nishimura; Lillian Inamasu Nishimura; Herbert Ohigashi; Yukio Okuda; Kazue Nakasone Okuhara; Mary Elizabeth Tavares Ornelles; Edward Otsu; Jim & Pat Kashiwamura Owara; Antonia Ribucan Pagay; Pedro Rivera; Leonarda Lacio Rollins; Stan Saito; Charlotte Wakugawa Sakamoto; James Sato; Shirley Takahashi Sexton; Ruth Ikemoto Shigenaga; Stanley & Sally Shimabukuro; Nancy Shimoda; Michio Shishido; Frank Singson Sr; Teruko Takakura Smith; Toshiko Shirokane Sugiki; Helen Miyashiro Tamashiro; Richard Tanaka; Jeanette Higa Tengan; Robert Tsuji; Donald Watanabe; Hiroshi Yamachi; David & Betty Yap; Stephanie Satoko Yayoshi; Elsie Crowell Yoshinaga **1951** Henry Akana; Patricia Cabral; Janet

My Notes

It began as curiosity...but it soon became a dedicated quest: What was it about old Maui High School that made it so remarkable? As I learned more about the H'poko campus - from perusing decades-old yearbooks, squinting at microfilm copies of the MAUI NEWS, talking story with alumni, and reading old Hi-Notes, letters and documents - it became very clear: the history of our dear island school MUST be written!

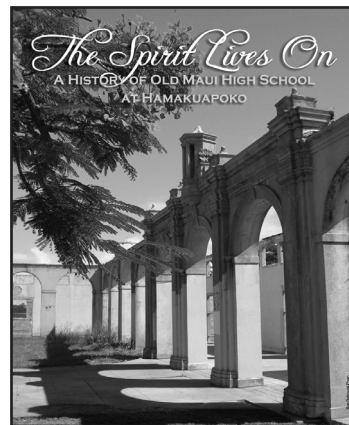
A history book that will explain how Maui's first public high school became a powerful influence on generations of "plantation kids", not only changing lives but bringing its ideals of equality, education and service to our communities, our state and our nation! A beautiful book, full of photographs and memories, told through the voices of Maui High alumni, with memories of school days (good and bad), classes, clubs, Sabers, proms and pep rallies, homework and home economics, and more.

Friends has assembled a team to produce and publish ***The Spirit Lives On***.

Our goal is to document the life and times of six decades of Maui High School and the students and faculty whose lives intersected here. And we need ...we want...your story! Each of you has a memory to share... an event or a moment you'll always remember from your time at Maui High.

We hope to include many of those special memories in the book. Please write to Friends, and tell about your special MHS memory. Don't wait. Email to friends@old-mauihigh.org, or write to: P.O. Box 792165, Paia, HI 96779. We plan to have copies of ***The Spirit Lives On*** ready for purchase in time for the 2007 Alumni Reunion. Join with us in telling the story of Maui High School -- it's your story, too!

Barbara Long
President



MAKING BIG PLANS

The MHS Alumni Reunion Committee meets at the Cafeteria to plan the best reunion ever! If you'd like to participate, call Rodney Inciong for meeting dates - 808-878-1795. Working hard here are, clockwise from front right: Ruth Mukai, Puahi Cockett, Stan and Barbara Chong-Kee, Co-Chairs Rodney Inciong and Richard Higashi, Ed Ichiriu, Margaret Enomoto, Sam Araki, Miriam Muller (sharing her input from Lahainaluna's recent 150th Reunion), and Paul M. Ueoka.



1921 LUMBER AWAITS RECYCLING

Removed from the MHS Administration Building, piles of planks and timbers are stored in the Shop Building, where historic architect Glenn Mason photographs pieces for replication. Some of the timbers are getting more immediate use as unique mementoes, as the 4 x 4s that once supported floors and walls are now shaped and polished, and adorned with a laser drawing of the school. These pieces of history will be available for sale at the 2007 Reunion, to help Friends programs. We thank Maui woodworker Frank Heller, and architect/artist Gerald Hiyakumoto for their help in creating these unique keepsakes.



Miikai Cho; Linda Boteilho Cravalho; Juanito "Jon" Cua; Naila Filler Gallagher; Leslie Goshi; Karen Higa; Robert Higa; Daisy Ishibashi; Nancy Ishii; Janet Ah Loy Kamana'o; Shishido Kazuo; Mildred Isobe Kinoshita; Nobuko Obayashi Kuhn; Fukuichi Kusakabe; Edith Nakashima Matsumoto; Ruth Ishida Matsuura; Stanley Minatogawa; Mildred Miyashiro; Joanne Fleming Muray; Sadao Nakasone; Kinuye Kijinami Nihei; Jeanette Itakura Okuda; Frances Hamasaki Ota; Patsy Sato Ota; David Pojas; Aline Hamaguchi Rolaff; Yofu Sakane; Tom Shimabukuro; Sue Sakai Soga; Janet Kawahara Takamune; Mitzi Matsubara Taketa; Esther Sakamoto Tyau; Ethel Yamaguchi; Setsuko Yamashita; Stan Yumen **1952** Jean Yoshizu Akagi; Charlotte Nagata Akiyama; Shirley Fujimoto Anderson; In memory of Roy Arakawa; In memory of Walter Hanzawa by Margaret Hanzawa; Geraldine & Millie DeCoite Hill; Edward Hirai; Noboru Hironaka; Irene Kajihara Imada; Eileen Sakagawa Kishinami; Peggy Nagata Maruoka; Allen Matsunaga; Patricia Nakasone Miyashiro; Janet Kitagawa Moore; Grace Kigawa Murakami; Hirotada & Sally Murakami; Ruth Umetsu Nakao; George Nakasone; Edward Ogasawara; Tom Oshiro; Paul Sakuma; Kenneth Sato; Jean Takakura Tanaka; Ai Uehara Unten; Shirley Yoneda Wong; Mae Pung Yoshioka; Carol Shirokane Yoshiyama; In memory of Ethel Shimote Yumen by Gerald & Millie DeCotite Hill **1953** Eleanor Nishimoto Arakaki; Atlas Arakawa; Robert Cua; Robert Davis; George Enoki; Jane Shiraishi Festerling; Kathryn Honda Fujioka; Dorothy Genn; Shizue Jenny Yamashita Hedani; Ralph Ichikawa; Wilfred Ikeomoto; Jane Inouye; Julia Malaqui Ishii; Gladys Kina Isobe; Rebecca Soliben Jacobo; Nobuo Kanemoto; Allan & June Kawaharada; Yvonne Kishi; Roy & Virginia Nakatsukasa Kitagawa; Harry Kiyoto; Wayne Kobayashi; Nobuyoshi Komoda; Peter Leong; Clarence Matsumoto; Reiko Kuwashima Matsunaga; Paul Matsuoka; Lawrence Mercedes; Helen Kunishige Mimura; Harrison & Helen Miyahira; Betty Akemoto Mizuguchi; Henry Monden; George Nagano; George Nakamura; Larry Nakashima; Matsuo Okamoto; George Otani; James Ouchi; Pedro Padron; Hiroko Marian Pharr; William & May Sakamoto; Elaine Fukuhara Sato; Herman Sugimura; Sally Nagata Viveiros; Stanley Wakakuwa; Adelina Walsh; Robert Yamashida; Ellen Maalea Yap; Al Young **1954** Richard John Alexander; Manuel Amoral; Fred Araki; Steck Bak; James Baldovi; Alexander Bantilan; April Corioso; William Dease; Grace Saito Fujimoto; James Hampton; Sachiko Tanaka Hayashi; Edith Sakamoto Ichiriu; Ernest Kajihara; Nora Morita; Helene Yamashiro Otani; Magdalena Robia Pan; Alice Yogi Sasaki; Don Shimabukuru; Harold Shishido; Porita Wassman Stanke **1955** Ida Hokoana Adelstein; Sally ishi Ayabe; Fred Bush III; Robin Zane Canto; Reecca Quitazol Correa; Greace Kekiwi David; Joseph Dolim; Ramsey Downie; Delphina Golis Fuller; Sally Katena Gima; Edith Adagu Goya; Randy Honda; Ralph Honjo; James Ichikawa; Kazue Yamamoto Kadosaki; Tom Kakihara; Evelyn Poaipuni Kalehuawehe; Donald Karimoto; Ralph Kehano; Shirley Ann Ueoka Kimizuka; Winifred Matsui Kubo; Marian Murakami Maruyama; Les Matsubara; In memory of Barbara Kochi Matsuda by Kenneth Matsuda; Kenneth Matsuda; Ethel Masuda Matsuo; Alice Pagan Medeiros; Merle Seki Momita; Dawn Matsuoka Moroye; James Nakasone; Clarence Nakatsukasa; Florinda Cambra Nunes; Gladys Karakawa O'Connor; Judith Kiyabu Oda; Judith Oshiro Onaga; Howard Oshiro; Joe Oshiro; Francis Otsu; Rita Palafox; Itsue Kawachi Pojas; William Razo; Catherine Amarin Rubino; Spencer Sakae; David Sakai; Doris Matsumoto Sakaida; Carol Honda Takase; Betty Takata; Florence Nouchi Takayama; Judy Ikemoto Takayama; William Tamanaha; Lorraine Sato Tamaribuchi; Larry Tomita; Thelma Waki; Leona Rocha Wilson; Betty Nagata Wong; Jan Wysard; Leslie Yamanaka; Kenneth Yap; Arline Hironaka Ytuarte; Alvin Yumen; Thomas Yumen **1956** Anonymous; MHS **1956** 50th Class Reunion; Fred & Leonarda Asuncion; Aileen Hamamoto Carter; Roy Fukutomi; Elizabeth Allen Neiva; Joseph Padron; Jane (Miyashiro) Serikaku; Robert Takahashi **1957** Emilio Bareng; Ruth Cabrinha Fernandez; Gordon Fujiwara; Kay Hanano; Patricia Amborse Hockett; James Ibara; Roy Kaneshiro; Daniel Kawabe; Suzanne Tanimoto Kozaki; James Matsuura; Roy Migita; Howard Nishimoto; Rita Baldovi Nordquist; Jean Nakatsukasa Oshiro; Joyce Harada Patrick; Richard Suzuki; Glenda Ueoka Ujiie; Patsy Nishihara Yoshimura **1958** Anonymous; Jane Tamanaha Au; Sylvester Baldovi; Corrine Cambra Blalock; Edna Ogata Crawford; Edwin Doi-Davis; Alfred & Vickie Domingo; Esperanza Engoring; Alfred Gima; Paul & Patsy Hasegawa; Robert Higa; Janet Honda; Florence Arakawa Iida; Shirley Nomua Kakuda; Kenneth Mijo; Faith Sato Miyahira; Amy Yonashiro Mizuno; Wallace Murakanz; Iris Ouchi Nishida; Barbara Enomoto Nishijo; Sandra Sakae Nishimi; Luella Nishimoto; Hironoko Noda; Robert Oyafuso; Luisa Tabaco Padron; Stephen Petro; Edwin Polendey; Harmony Cummings Stahl; Laura Bulda Swinth; Mollie Ganiko Tamashiro; Kenneth Tamura; George Tanahara; Charmaine Tavares; Ronald Watanabe; Elaine Sakai Yoshida **1959** Anonymous; Charles Barclay; Howard Harada; Amy House; Kenneth Ichikawa; Clarence Ishizu; Stella Endo Kodama; Myrtle Masuda Kuramoto; Henry Lopes; Pauline Ambrose Lovitt; Janet Nakashima; Ione Nakasone; Barbara Carvalho Silva; Dorothy Suzuki; Harry & Janet Suzuki; Sandra Tengan Suzuki; Ester Takakura; Wayne Takakura; Patsy Okazaki Wong **1960** Melvin & Flora Amaral Aina; Muriel Ogata Aizawa; Byron Cleeland; Joy Watanabe Doi-Davis; Bert Inouye; Patricia Souki Kochi; Carol Koga; Richard Nagahiro; Ronald & Stephanie Sakaki; Naomi Shimabukuro; Robert Shimabukuro; Gilbert Takahashi; Irving Uradomo; Philip Valentine **1961** Wilfred Albiar; Leslie Cabrinha; In memory of James Kaaiakamanu by Gordon Kaaiakamanu; Mae Honda Puni; George Shim **1962** Ben Almasin; Morris Asato; Santos Bacos; Gerri Cantwell; Yvonne Doi-Davis; George Fukushima; Janet Baybayan Higgison; Sandra Watanabe Ichikawa; Teresa Kakugawa; Yukiko Murakawa; Lillian Isobe Niimi; Arthur Onikama; Robert Rico; Betty Komoda Shibuya; Homer Shiroma; Leslie Takamura; Remedios Tamayo; Warren Tanaka; Roy Tempo; Steven Uehara; Eileen Sakata Williams; Aimee Shiota Yatsushiro **1963** Tung Kyau Chong; Harry Dobashi; Betty Suzuki Fujiwara; Roger & Gail Hasegawa; Carol Mae Watanabe Takahashi; Ann Takakura; Roy Tamayose; Florence Takaki Utsumi; Barbara Barreros Yanagida **1964** Judy Asato Hittle; Ken Imamura; Theresa Freitas Shaw; Margie Sakai Takaki; Diana Idemoto Tanaka; Charles & Lynne Sato Toma; Robin Hirashima Visser **1965** Evan Asato; Ruddy & Linda Bareng; In memory of Walter Browne by Francisco Constantino; Francisco Constantino; Barbara Gusman; Gail Hamai; Lorraine Ho; Ione Fay Onikama Isobe; Faith Ito; Gordon Kaaiakamanu; Joan Kametani Kawahara; In memory of David Kojia by Francisco Constantino; Gloria Malunao; Winona Crozier Mann; Francis Matsuda; Eva-Juliete Matsuura Miguel; Wayne & June Taritomi Ogawa; Elizabeth Watanabe Oishi; Ned Purdy; Eileen Sato; Carina Caires Shiota; Daniel Shishido; Carl Watanabe; Danny Yamamura **1966** Anonymous; Jackie Pias Carlin; Al Imamura; Dennis Ishii; Curtis Lee; Lyman Morikawa; Eloise DeRego Okimoto; Deborah Espania Souza; Ernest Watanabe **1967** Iris Vares Blessinger; Dianne Matsuoka Figge; Grace Ishii; Beryl Jio Jim; Lloyd Labasan; Dennis Souza Sr; Paul & Gwen Ueoka; Catalino Villanueva Jr **1969** Alan & Ann Arakawa; Susan Arakaki Ng **1970** Ululani Scales Correa; Linda Misaki; Gene Saito; Alvin Sakai **1971** Wesley Goodin; Gehrig Ikeda; Roberta Molina Souza

SUPPORTERS A&B Foundation; Neil Abercrombie; Jean Alexander; Roy Arakawa ; The Fred Baldwin Foundation; In honor of Domingo Bareng by Emilio Bareng; Robert Bluh – Fairfield Resorts; George Bradley – Founder; William & Joyce Calvert; Tom Cannon; Meredith Ching; In memory of Bernanda Punio Cua by Robert Cua; In memory of Felix Cua Sr by Robert Cua; In memory of Charlie Dapitan; Yvonne Doi-Davis; Ruth Fernandez; In memory of Barbara Foster by Joseph Dolim; Robert Gilroy; Russel & Muffy Gushi; Marvin Hamai; D.L. Harris; Chris Hart; HEI Charitable Foundation; Eloise Higa; Karen Higa; Roy & Gwen Hiraga; Sumiye Horiuchi; Robert Hughes; Richard Ikeda; In memory of Satoki & Waru Ikeda by Robert Ikeda; Wilfred Ikemoto; Jiroku and Alice Imada; Julia Ishii; Roko Ishizuka; W. Kaholokula; Frances Kakazu; Leila Kaleialoha; In memory of Garrett & Catherine Kawada by Robert Cua; Jean King; In memory of Tom Kiyosaki by Kiyosaki Tractor Works; Wayne Kiyosaki; B.T. Kono; Henry & Alice Kono; Elaine Kumabe; Ruth Larkin; Jon & Roz Lightfoot; Ellen Loo; Gerald Machida; Kay Makii; Martha Martin; Akiko Claudia Matsuda; Nancy Matsuoka; Robert & Amy Mihara; Stanley & Martha Minatogawa; In memory of John Mink; Melvin & Nancy Miyake; Ricky Momota; Laurel Murphy; Yvonne Nagoshi; Jennie Nakamoto; Ione Nakasone; Ray Nitta; Hiroko Noda; Shogo Ogata; Tomoko Ohata; Sam Ohigashi; Lillian Oshiro; Helene Otani; James Ouchi; Dr. William & Ann Patterson; John & Melinda Peterson; In memory of Catalina Marie Elena Punio by Robert Cua; In memory of Satoru Roppiyakuda by June Roppiyakuda Chin; Judy Sakai; Robert Sakurauchi; Glenn Shimabuku; Gary Shishido; Takeo Shishido; Nestor Soliven; In memory of Margaret Sone Suzuki by Elsie Sone Okubo; In honor of Sorority of ADK-Gamma; In memory of Sorority of ADK-Gamma by Faith Ito; In behalf of David Souza; Evelyn Suno; Iwao & Sandra Suzuki; In honor of Masao and Ruth Takaki; June Takano; Hideko Tamanaha; In memory of Fred Tamayose; Joy Tamayose; Ted Taniguchi; Edward Tanimoto; Doris Uchida; Paul and Gwen Ueoka; Thomas Umetsu; Miyoko Florence Wakabayashi; Lin Chun Wong; William & Lucy Wong; Estelle Yagi; Constance Yamamoto; Yoshio Yamanuha; Yaemi Yogi; Judith Yoshida; In memory of Dianne Shiota Yoshizawa by Aimee Shiota Yatsuhiro

Note: Members who omitted their MHS class year from their membership form have been included in this category. Please write and give us your class year, so we may place your name in the appropriate section.

Registration Form

Old MAUI HIGH SCHOOL Alumni Reunion

September 14, 15 and 16, 2007



A once-in-a-lifetime event, at the Maui High School campus at Hamakuapoko!
Come back to our Dear Island School to renew friendships, relive memories,
participate and celebrate!

Name (include Maiden Name) _____

Mailing Address _____

City

State

ZIP

Phone (_____) _____ -- _____

What year(s) did you attended MHS: Freshman ____ Sophomore ____ Junior ____ Senior ____

Former Maui Residence/Town _____

Total

1. Reunion Registration

Number attending _____ X \$5.00 each \$ _____

2. Luau (Saturday)

Number of Tickets _____ X \$15.00 each \$ _____

3. MHS Reunion T-Shirts (pick up at Reunion)

small ____ med ____ large ____ XL ____ X \$15.00 each \$ _____

Here's an additional amount to help support the Reunion \$ _____

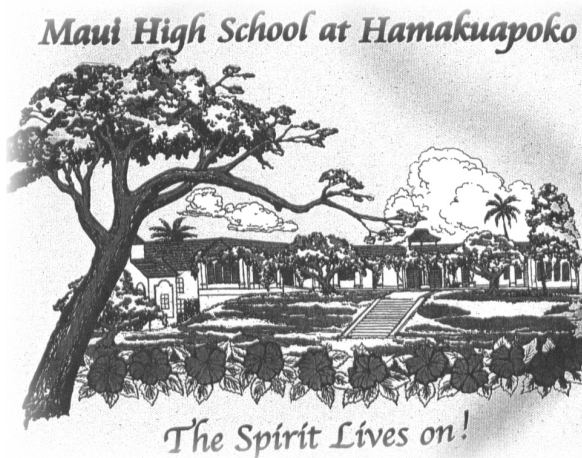
PLEASE MAKE YOUR CHECK PAYABLE TO: MHS ALUMNI REUNION COMMITTEE

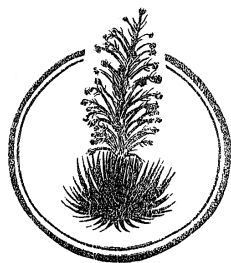
Amount enclosed \$ _____

Please mail this form with your check to:

MHS Alumni Reunion Committee
c/o Barbara Chong-Kee
230 Kualani Drive
Pukalani, HI 96768

Design on back of
Reunion T-shirt





FRIENDS OF OLD MAUI HIGH SCHOOL
P. O. Box 792165, Paia, HI 96779
<http://oldmauihigh.org>

NON-PROFIT ORG.
U.S. Postage PAID
Puunene, HI
Permit no. 73

~~important reunion information inside ~~

Board of Directors

Barbara Long
President

Jan Dapitan
Vice President

Ruth Mukai
Secretary

Trevor Tokishi
Treasurer

Gwen Hiraga
Kathy McDuff
Mike Molina
Herman Nascimento
Paul M. Ueoka

Jane Miyahira
Recording Secretary

Alan Tengan CPA
Accountant

Sherry Yamashita
Data Managment

Rich Lucas
EPA Project Assistant

Gill Brooks
Web Master / Newsletter

MAKING IT HAPPEN

Continued from page 3

It will be very costly to restore needed water, waste treatment and other infrastructure to the site.

Mothballing and stabilization to preserve the Administration Building until that is done is also costly, but essential. And the final design and rehabilitation for the Patsy T. Mink Center will cost many millions of dollars. But after all the work is done, the rewards will be great! Knowing this, Friends and CWD are steadfast in our resolve to carry out our mission to preserve and revitalize the structures, site and spirit of old Maui High School. With your support, as we seek funding from Federal, State, County and private sources, we will complete the task together! Mahalo for your help!

Graphics and composition for this issue of
SILVERSWORD have been funded through our EPA grant.
Other costs and mailing have been funded through donations
by Friends members and supporters. Mahalo!