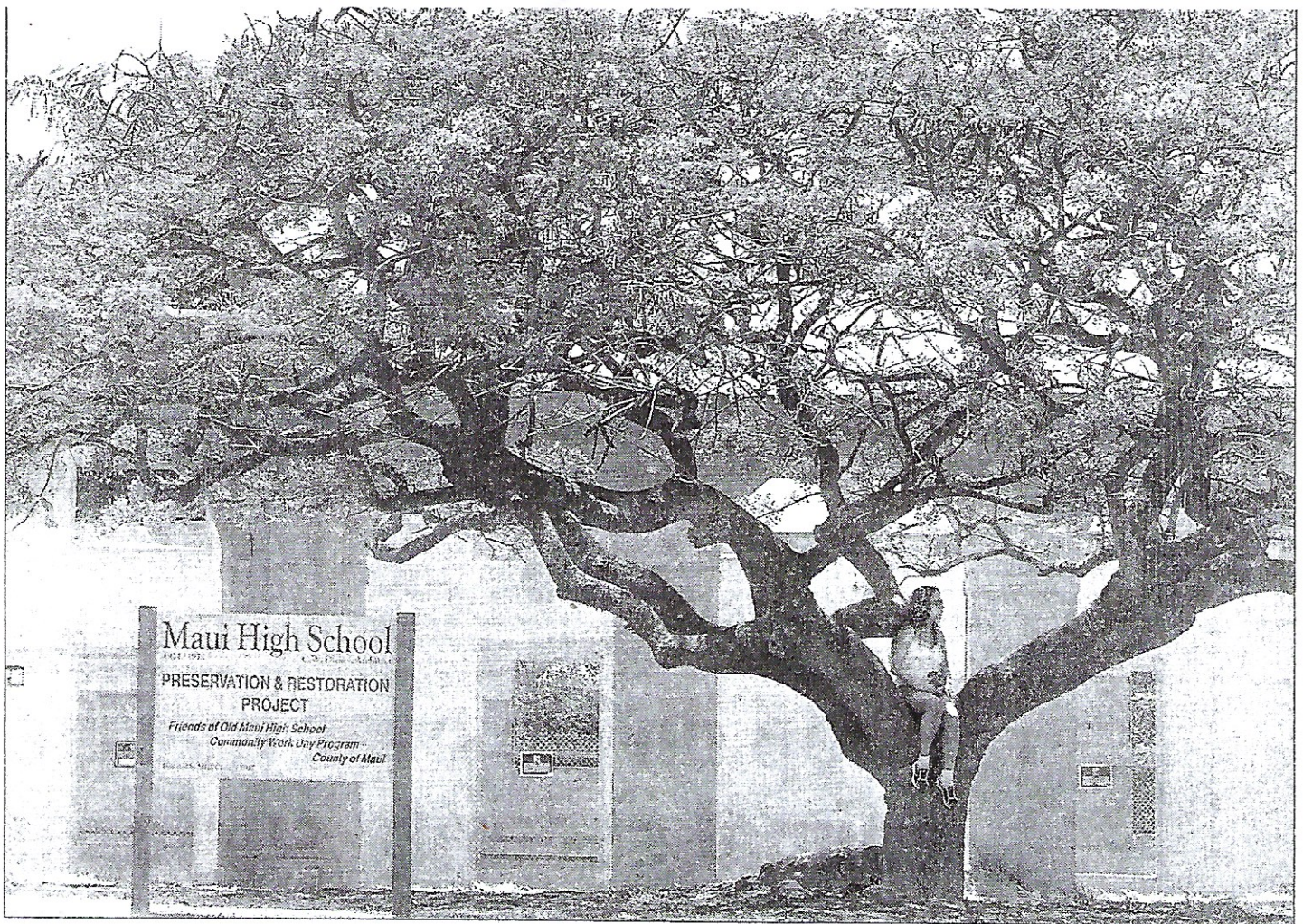


MAUI NEWS  
(A-4)  
Monday, July 3  
2006

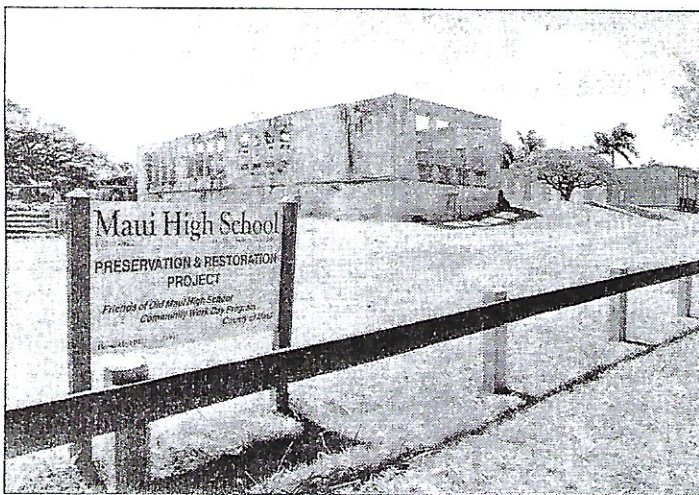


The Maui News / AMANDA COWAN photo

A visitor from Los Angeles, Vrunda Patel, enjoys a scenic perch Sunday morning in one of the trees that shade the campus at the

Old Maui High School, fronting the administration building that has been designated on the Hawaii State Register of Historic Places.

# Old Maui High building added to state historic places register



Damaged by fire and age, the roofs of the Old Maui High were removed while volunteers with the Friends of the Old Maui High have cleared accumulated debris from the historic buildings. The friends think their efforts to restore the C.W. Dickey administration building are buoyed by the designation of the structure on the State Register of Historic Places.

HONOLULU — The administration building of Old Maui High was added to the State Register of Historic Places last week during a meeting of the Hawaii Historic Places Review Board.

The panel also recommended that the state historic preservation officer place the property for eligibility on the National Register of Historic Places.

"The listing not only confirms that the building was an architectural gem and has national significance because of Patsy Mink's connection, but it underlines the contributions of the school to the social, cultural and economic history of Maui," said Barbara Long, president of The Friends of Old Maui, a grassroots organization that hopes to restore the administration building.

A stately whitewashed cement structure with graceful archways, the building was designed by

renowned isle architect Charles W. Dickey.

Classes began at Old Maui High in 1913, seven years before Dickey's building opened its doors. The school closed in 1972 when the campus was relocated to Kahului.

The original structure fell into disrepair over the years, but Long's group, made up of alumni and other supporters, hopes to raise enough money to restore the building to its original glory and turn it into a rehabilitation and training center that would be named after Mink, the school's most famous graduate.

Long said the listing on the state register would be invaluable in the fundraising effort.

Getting added to the national register would provide even more opportunities to qualify for funding resources reserved for important landmarks, she said.